

HAMPSTEAD

4631 Broadwick St.

The Harboure

\$557,800

5 Bedroom, 3.5 Bath

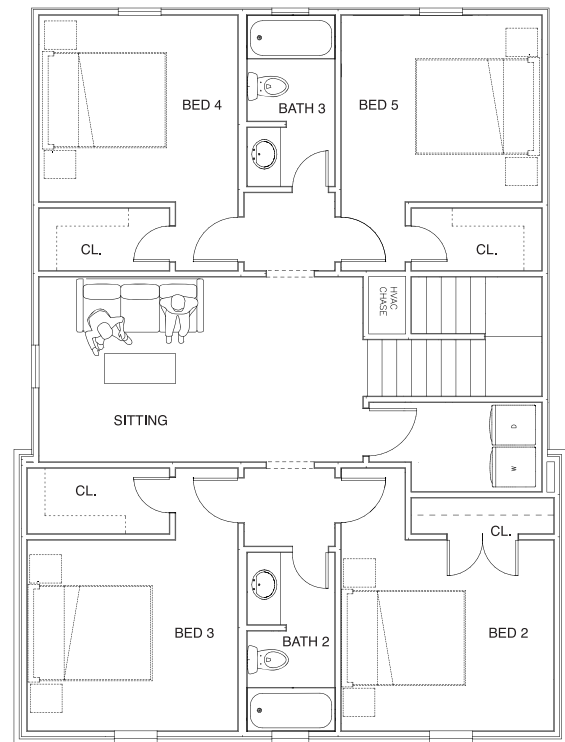
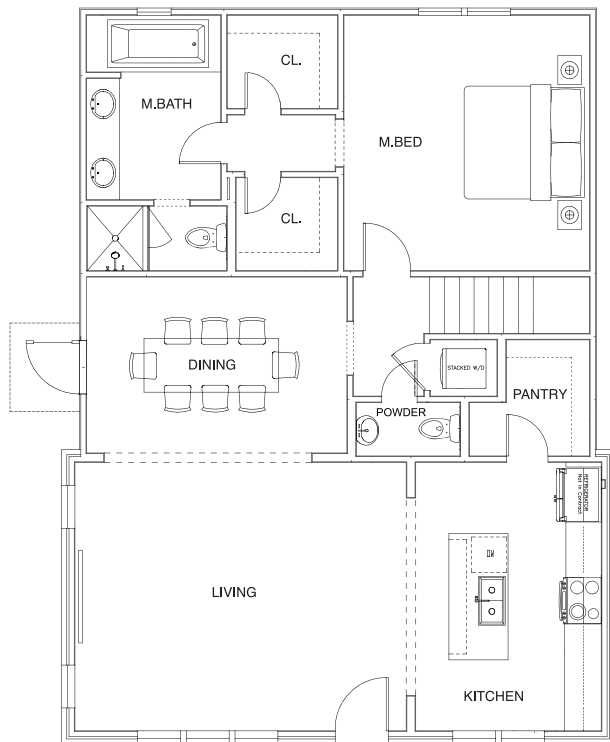
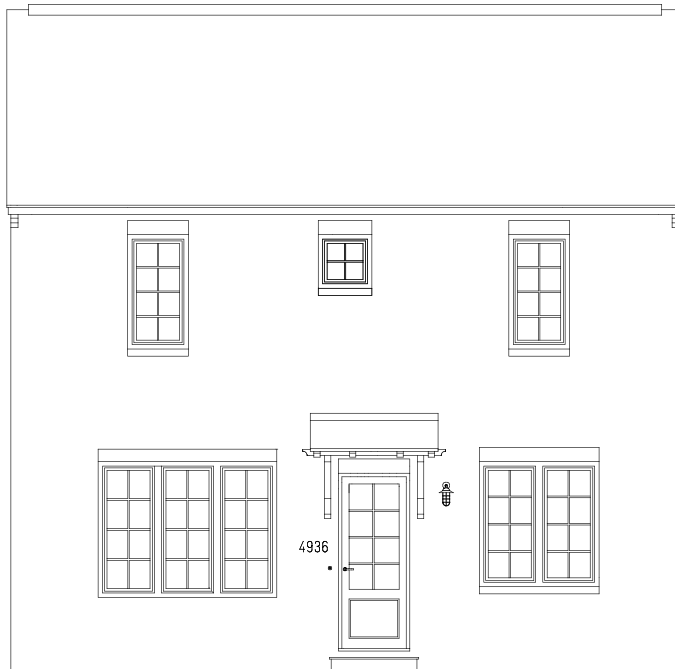
Conditioned Area: 2,498 sq. ft. approx.

Detached 2-Car Garage: 484 sq. ft. approx.

Lot U-32

Features Include:

- Post-Tension Foundation
- Premium Insulation Package
- Brick Exterior with Hardi Siding
- Weather Shield Aluminum-Clad Windows
- Prefinished Wood Flooring, Carpet, and Ceramic Tile
- Custom Cabinets with Soft Close Hinges and Glides
- Durable Quartz Countertops
- Premium Interior and Lighting Selections
- G.E. Appliances in Stainless Steel
- Ground Floor Master Bedroom with Walk-In Closets
- 2 Utility Rooms: Located Upstairs and Downstairs
- Detached 2-Car Garage (Not Shown)
- Spacious Private Courtyard
- Access to Hampstead's Finest Amenities



For more information, visit our Hampstead Sales House located at 8200 Marylebone High Street.

334.270.6730 | sales@hampsteadcommunityrealty.com | www.hampsteadliving.com