

HAMPSTEAD



4611 Broadwick St.

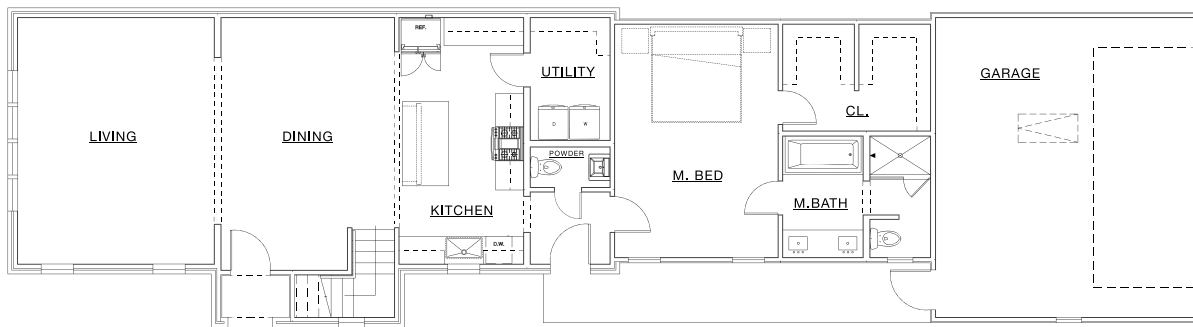
The Selene

\$545,000

4 Bedroom, 3.5 Bath
2,339 sq. ft. conditioned approx.
Lot U-30

Features Include:

- Post-Tension Foundation
- Premium Insulation Package
- Brick Exterior with Hardi Siding
- Weather Shield Aluminum-Clad Windows
- Prefinished Wood Flooring, Carpet, and Ceramic Tile
- Custom Cabinets with Soft Close Hinges and Glides
- Durable Quartz Countertops
- Premium Interior and Lighting Selections
- G.E. Appliances in Stainless Steel
- Ground Floor Master Bedroom with Walk-In Closet
- Attached 2-Car Garage
- Spacious Private Courtyard
- Prime Corner Lot Location
- Access to Hampstead's Finest Amenities



For more information, visit our Hampstead Sales House located at 8200 Marylebone High Street.

sales@hampsteadcommunityrealty.com

334.270.6730 | www.hampsteadliving.com

Town building, design and construction are an evolving process. The Hampstead master plan, features, floor plans, and pricing may change without notice due to a variety of considerations. Any illustrations are artist's depictions only and may differ from completed improvements. This is not an offer to sell real estate property. Information is correct but not warranted. Void where prohibited by law. Equal Housing Opportunity. © 2023.

