

HAMPSTEAD

4543 Bloomsbury St.

The Elsa

\$425,000

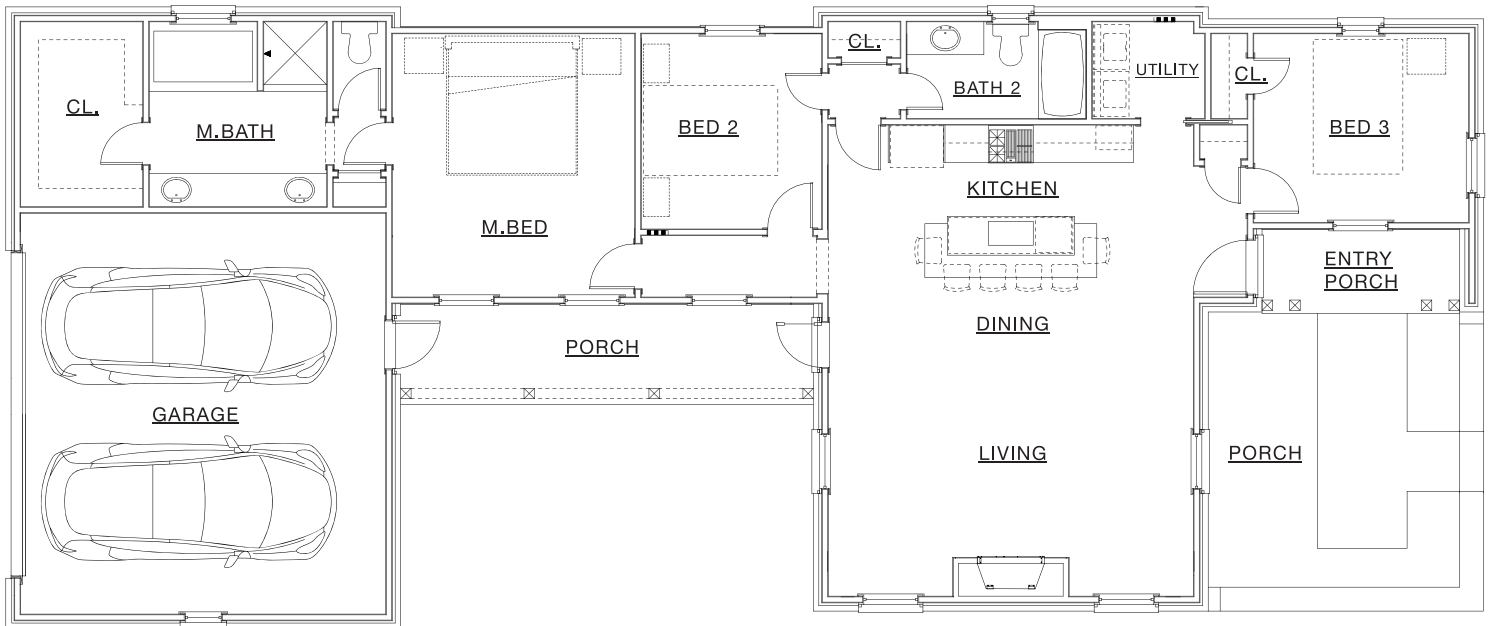
3 Bedroom, 2 Bath

1,545 sq. ft. conditioned approx.

Lot X-21

Features Include:

- Post-Tension Foundation
- Premium Insulation Package
- Brick Exterior with Hardi Siding
- Weather Shield or Pella Aluminum Clad Windows
- Prefinished Wood Flooring, Carpet, and Ceramic Tile
- Custom Cabinets with Soft Close Hinges and Glides
- Durable Solid Surface Countertops
- Premium Interior and Lighting Selections
- GE Appliances in Stainless Steel
- Ground Floor Primary Bedroom with Walk-In Closet
- Attached 2-Car Garage
- Private Garden Yard with Covered Side Porch
- Set Facing Hampstead Preserves
- Access to Hampstead's Finest Amenities



For more information, visit our Hampstead Sales House located at 8200 Marylebone High Street.

334.270.6730 | sales@hampsteadcommunityrealty.com | www.hampsteadliving.com