

# HAMPSTEAD



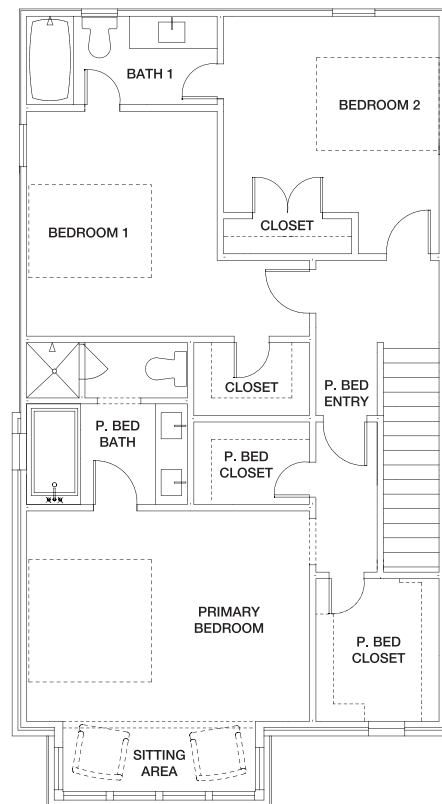
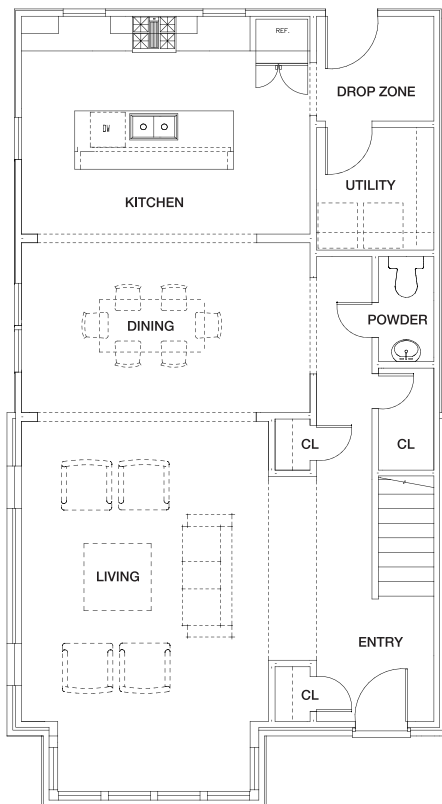
4535 Bloomsbury St.

The Marjorie Coming Soon

**3 Bedroom, 2.5 Bath**  
**2,166 sq. ft. conditioned approx.**  
**Lot X-20**

**Features Include:**

- Post-Tension Foundation
- Premium Insulation Package
- Brick Exterior with Hardi Siding
- Weather Shield or Pella Aluminum Clad Windows
- Prefinished Wood Flooring, Carpet, and Ceramic Tile
- Custom Cabinets with Soft Close Hinges and Glides
- Contemporary Quartz Countertops
- Premium Interior and Lighting Selections
- GE Appliances in Stainless Steel
- Second Floor Primary Suite with Walk-In Closets
- Detached 2-Car Parking Pad
- Private Garden Yard with Stone Walkway
- Access to Hampstead's Finest Amenities



For more information, visit our Hampstead Sales House located at 8200 Marylebone High Street.  
334.270.6730 | sales@hampsteadcommunityrealty.com | www.hampsteadliving.com

